



JK INDUSTRIAL CORPORATION

AN ISO 9001:2015 COMPANY

Manufacturers & Exporters of Quality Hand Tools

www.jkhandtoolsindia.com



Company Profile

J.K. Industrial Corporation a leading Name in the Hand tools for past many years has been a reckoned name in international markets. Recognition in Quality, Services and Competitive prices exposed J.K. Industrial to global markets making us today the growing group as a manufacturer, supplier and distributor.

The Company is supported by its own dedicated and inspired team of engineers for designing and testing as per international standards and smart marketers for efficient sales, All our Products confirm to the highest international standards and are being constantly researched daily to enhance the performance. Serving the global sectors for past several years in different geographical markets, we are aware of the changing needs of the customers which we are upgrading on time to time basis,

At J.K. Industrial we are there:

- *To supply quality at the best possible price and achieve total customer satisfaction.*
- *To monitor the latest development and keep abreast the diversifying markets. Customers which we are upgrading on time to time basis,*

The Continuous flow of patronage by the esteemed customers year after year enthralls our motive to excel in establishing the name J.K. Industrial Corporation as the market leader....

BRANDS : BOON
: JKIC



Our Product Range Index

SPANNERS	1 - 5
AUTOMOTIVE TOOLS	6 - 7
PLIERS & PINCERS	8 - 10
PLUMBING TOOLS	11
CARPENTARY TOOLS	12 - 14
VICES	15
LUBRICATING TOOLS	16
MASONARY TOOLS	17
STRIKING TOOLS	18
LEATHER TOOLS APRON RANGE	19
PUNCHES & PINS	20
HACKSAWS	21

Combination Spanner



A

B

C

D

E

F

G

H

Combination Spanner:

- A. Recess Panel, Matt Finish, Carbon Steel
- B. Raised Panel, Head & Panel Polished, Carbon Steel / CrV Steel
- C. Recess Panel, Matt Finish, DIN 3113, CrV Steel
- D. Recess Panel, Head Polish, DIN 3113, CrV Steel
- E. Elliptical Panel, Full Polish, Mirror Finish, Chrome Plated, CrV Steel
- F. Elliptical Panel, Full Polish, Satin Finish, CrV Steel
- G. Elliptical Panel, Full Polish, Black Chrome Plated, CrV Steel
- H. Cold Stamped Press Panel, Matt Finish / Head Polish, CrV Steel, DIN 3113

Features:

Fully Hardened & Tempered

Finish:

Matt / Head Polish / Full Polish

Steel:

Chrome Vanadium Steel
Carbon Steel

Plating:

Chrome Plating
Satin Plating
Black Chrome

Packing:

Bulk Packing / Box Packing
PVC Pallet Packing
Kit Roll Packing
Plastic Rack Packing (Horizontal & Vertical)
Single Piece Plastic Hanger Card Packing / Color Box

Spanners Conforming to ISO / DIN / ANSI Standards

Combination Spanner n Sets

- Set of 6Pcs: 8, 10, 12, 13, 14, 17mm
- Set of 6Pcs: 1/4", 3/8", 7/16", 1/2", 9/16", 5/8" inch
- Set of 8Pcs: 8, 9, 10, 11, 13, 14, 17, 19mm
- Set of 8Pcs: 1/4", 5/16", 3/8", 7/16", 1/2", 9/16", 5/8", 3/4" inch
- Set of 12Pcs: 6, 7, 8, 9, 10, 11, 12, 13, 14, 17, 19, 22mm
- Set of 12Pcs: 1/4", 5/16", 3/8", 7/16", 1/2", 9/16", 5/8", 11/16", 3/4", 13/16", 7/8", 1" inch
- Set of 25Pcs: 6, 7, 8, 9, 10, 11, 12, 13, 14, 15, 16, 17, 18, 19, 20, 21, 22, 23, 24, 25, 26, 27, 28, 30, 32mm

Size Range:

Range Size mm				Regular Size inch		
6	13	20	27	1/4"	5/8"	1"
7	14	21	28	5/16"	11/16"	1-1/6"
8	15	22	29	3/8"	3/4"	1-1/8"
9	16	23	30	7/16"	13/16"	1-1/4"
10	17	24	32	1/2"	7/8"	
11	18	25		9/16"	15/16"	
12	19	26				



Double Open End Spanner



Double Open End Spanner:

- A. Recess Panel, Matt Finish, Short Length, Carbon Steel
- B. Recess Panel, Matt Finish, DIN 895, Carbon Steel / CrV Steel
- C. Recess Panel, Head Polish, DIN 3110, CrV Steel
- D. Recess Panel, Matt Finish, DIN 3110, CrV Steel
- E. Elliptical Panel, Full Polish, Satin Finish, CrV Steel
- F. Elliptical Panel, Full Polish, Black Chrome, CrV Steel
- G. Elliptical Panel, Full Polish, Mirror Finish, Chrome Plated, CrV steel
- H. Cold Stamped Press Panel, Matt Finish / Head Polish, CrV Steel, DIN 3110

Features:

Fully Hardened & Tempered

Finish:

Matt / Head Polish / Full Polish

Steel:

Chrome Vanadium Steel
Carbon Steel

Plating:

Chrome Plating
Satin Plating
Black Chrome

Spanners Conforming to ISO / DIN / ANSI Standards

Double Opened End Spanner Sets

Set of 6 Pcs : 6x7, 8x9, 10x11, 12x13, 14x15, 16x17mm

Set of 8 Pcs : 6x7, 8x9, 10x11, 12x13, 14x15, 16x17, 18x19, 20x22mm

Set of 12 Pcs : 6x7, 8x9, 10x11, 12x13, 14x15, 16x17, 18x19, 20x22, 21x23, 24x27, 25x28, 30x32mm

Size available : 6x7, 8x9, 10x11, 12x13, 14x15, 16x17, 18x19, 20x22, 21x23, 24x27, 25x28, 30x32mm
8x10, 10x12, 10x13, 11x13, 12x14, 13x17, 14x14, 17x19, 19x22, 22x24, 24x26, 27x32mm

Packing:

- Bulk Packing / Box Packing
- PVC Wallet Packing
- Kit Roll Packing
- Plastic Rack Packing (Horizontal & Vertical)
- Single Piece Plastic Hanger Card Packing
- Color Box



Bihexagonal Ring Spanners



A



B



C



D



E



F

Bihexagonal Ring Spanners

- A. Recess Panel, Head Polish, Carbon Steel
- B. Recess Panel, Head Polish, DIN 838, CrV Steel
- C. Elliptical Panel, Full Polish, Mirror Finish, Chrome Plated, CrV Steel
- D. Elliptical Panel, Full Polish, Satin Finish, CrV Steel
- E. Elliptical Panel, Full Polish, Black Chrome Plated, CrV Steel
- F. Cold Stamped Press Panel, Matt Finish / Head Polish, DIN 838, CrV Steel

BI-Hexagonal Ring Spanner in Set:

Set of 6 Pcs: 6x7, 8x9, 10x11, 12x13, 14x15, 16x17mm

Set of 8 Pcs: 6x7, 8x9, 10x11, 12x13, 14x15, 16x17, 18x19, 20x22mm

Set of 12 Pcs: 6x7, 8x9, 10x11, 12x13, 14x15, 16x17, 18x19, 20x22, 21x23, 24x27, 25x28, 30x32mm

Sizes Available: 6x7, 8x9, 10x11, 12x13, 14x15, 16x17, 18x19, 20x22, 21x23, 24x27, 25x28, 30x32mm

8x10, 10x12, 12x14, 13x17, 14x17, 17x19, 19x22, 22x24, 24x26, 27x32mm

Features:

Fully Hardened & Tempered

Finish:

Matt / Head Polish / Full Polish

Steel:

Chrome Vanadium Steel
Carbon Steel

Plating:

Chrome Plating
Satin Plating
Black Chrome

Packing:

Bulk Packing / Box Packing
PVC Wallet Packing
Kit Roll Packing
Plastic Rack Packing (Horizontal & Vertical)
Single Piece Plastic Hanger Card Packing / Color Box



Spanners Conforming to ISO / DIN / ANSI Standards



SLOGGING SPANNER - RING END

RING END, Selected Carbon Steel / CV Steel, Chrome Plated or Black Finish

Size (mm)	Size (mm)	Size (mm)
24	42	85
27	46	90
30	50	95
32	55	100
33	60	105
34	65	110
36	70	120
38	75	
41	80	



RING SLOGGING SPANNER - DEEP OFFSET

Selected Carbon Steel / CV Steel, Chrome Plated or Black Finish

Size (mm)	Size (mm)	Size (mm)
22	36	60
24	41	65
27	46	70
30	50	75
32	55	



PODGER WRENCH SINGLE OPEN ENDED

Drop Forged made from Carbon Steel / Chrome Vanadium steel 31 CrV3
Black Phosphate Finish

Size (mm)	Length (mm)	Size (mm)	Length (mm)	Size (mm)	Length (mm)
17	320	27	370	41	470
19	350	30	400	46	500
22	350	32	400	50	530
24	370	36	430	55	560



SINGLE OPEN VALVE WHEEL WRENCH

Drop Forged made from Carbon Steel / Chrome Vanadium steel 31 CrV3
Black Phosphate Finish

Size (SAE)	Length (Inch)	Size (SAE)	Length (Inch)
1	15	2	27
1-3/8	15-1/2	2-1/4	48



SLOGGING SPANNER - OPEN END

OPEN END, Selected Carbon Steel / CV Steel, Chrome Plated or Black Finish

Size (mm)	Size (mm)	Size (mm)
24	42	85
27	46	90
30	50	95
32	55	100
33	60	105
34	65	110
35	70	120
36	75	
41	80	



SINGLE OPEN END SPANNERS DIN 894

- Drop Forged Carbon Steel, DIN 894
- Chrome Plate/Zinc Plated/Auto Black

Size (mm)	Size (mm)	Size (mm)	Size (mm)	Size (mm)	Size (mm)
6	13	24	41	75	115
7	14	25	46	80	120
8	15	26	50	85	125
9	16	27	55	90	130
10	17	30	60	95	135
11	19	32	65	100	
12	22	36	70	110	



GAS SPANNER - BENT PANEL

- Drop Forged Carbon Steel
- Chrome Plated
- Hardened & Tempered

Size (mm)	Size (mm)
25	27



DOUBLE OPEN VALVE WHEEL WRENCH

Drop Forged made from Carbon Steel / Chrome Vanadium steel 31 CrV3
Black Phosphate Finish

Size (Inch)	Length (Inch)	Size (Inch)	Length (Inch)
1/2 x 21/32	8	1 x 1-5/16	17-1/2
1-1/16 x 1	10		



C TYPE / HALF MOON SPANNER

- Drop Forged made from Chrome Vanadium steel 31 CrV 3
- Hardened & Tempered
- Chrome Plated / Satin Finish

Size (mm)	Size (SAE)	Size (mm)	Size (SAE)
8 x 10		15 x 17	
10 x 11		16 x 17	
11 x 13		17 x 19	
12 x 13	7/16 x 1/2	18 x 19	
13 x 15		19 x 21	
14 x 15	9/16 x 5/8	19 x 22	3/4 x 7/8
13 x 17		20 x 22	
14 x 16		21 x 23	
14 x 17			



S TYPE SPANNER

- Drop Forged made from Chrome Vanadium steel 31 CrV 3
- Hardened & Tempered
- Chrome Plated / Satin Finish

Size (mm)	Size (SAE)
10 x 11	3/8 x 7/16"
11 x 13	7/16 x 1/2
12 x 13	
13 x 15	1/2 x 5/8
14 x 15	9/16 x 5/8
16 x 17	
17 x 19	11/16 x 3/4
18 x 19	



TORX SPANNERS

- 6 - Point Heads
- Drop Forged from CHROME VANADIUM STEEL, 31 CrV3
- Hardened and Tempered
- Chrome Plated

Size (mm)	Size (mm)
6 x 8	14 x 18
10 x 12	20 x 24



FLARE NUT SPANNERS

- Drop Forged made from Chrome Vanadium steel 31 CrV 3
- Elliptical Model Full Polished / Cold Stamped Press Panel
- Chrome Plated / Satin Finish

Size (mm)	Size (SAE)	Size (mm)	Size (SAE)
8 x 10	5/16 x 3/18	18 x 19	
10 x 11		19 x 22	3/4 x 7/8
10 x 12	7/16 x 1/2	20 x 22	
11 x 13		21 x 23	
12 x 14		22 x 24	
14 x 17		24 x 27	
16 x 17	11/16 x 3/4	25 x 32	
17 x 19		30 x 32	



STUBBY COMBINATION SPANNER

- Drop Forged made from Chrome Vanadium steel 31 CrV3
- Elliptical Model full Polished
- Chrome Plated/Satin Finish

Size (mm)	Size (SAE)	Size (mm)	Size (SAE)
10	3/8	15	
11	7/16	16	5/8
12		17	11/16
13	1/2	18	
14	9/16	19	3/4



ADJUSTABLE WRENCH

- Drop Forged Carbon Steel
- Chrome Plated/Burnish Finish
- With Or Without PVC Dip Insulation

Size (Inch)	Size (mm)	Size (Inch)	Size (mm)
6	150	12	300
8	200	15	375
10	250	18	450



CROSS WHEEL SPANNER

• Chrome plated/Powder Coated

Dia & Length	Size Available
14mm x 14"	17 x 19 x 21 x 23
16mm x 16"	17 x 19 x 22 x 3/16
16mm x 20"	17 x 19 x 21 x 1/2"
	17 x 19 x 22 x 13/16



"L" TYPE WHEEL SPANNER, SINGLE / DOUBLE SOCKET

Drop forged carbon steel, Chrome plated/painted.

Single Socket		Double Socket	
Size (mm)	Size (inch)	Size (mm)	Size (mm)
17	11/16	8	17
19	3/4	10	19
21	13/16	12	22
23	7/8	14	
24	15/16		



TYRE LEVERS

Made from carbon steel/chrome vanadium steel, Chrome Plated

Size (mm)	Size (Length mm)	Weight Kg.	Pcs. Per Master Carton
300	12	0.220	100
400	16	0.400	50
500	20	0.650	30
600	24	0.900	20



TUBULAR SPANNERS - SEAMLESS TUBE

With / Without Tommy Bar, Finish Chrome Plated, Zinc Plated

Size (mm)	Size (mm)	Size (mm)	Size (mm)	Size (mm)
6 x 7	14 x 15	21 x 23	32 x 36	50 x 55
8 x 9	16 x 17	24 x 27	36 x 41	55 x 60
10 x 11	18 x 19	25 x 28	41 x 46	
12 x 13	20 x 22	30 x 32	46 x 50	



TRIANGULAR Y SHAPE SPANNER

Forged carbon steel, Chrome plated.

Size (mm)	Size (mm)
8 x 9 x 10	13 x 14 x 15
10 x 11 x 12	14 x 15 x 17



L SHAPED SPANNER WITH HOLE

Forged carbon steel, Chrome plated / Satin finish.

Size (mm)	Size (mm)	Size (mm)	Size (mm)	Size (mm)	Size (mm)
8	12	16	20	24	28
9	13	17	21	25	29
10	14	18	22	26	30
11	15	19	23	27	32



TRUCK WHEEL SPANNERS

- High Carbon/EN 8 Steel
- Polished Chrome Plated/Powder Coated

Size (mm)	Size (length)	Pcs. Per Master Carton
24 X 27	400	10
27 X 32	400	10
30 X 32	400	10
30 X 33	400	10
17 X 35	400	10
19 X 41	400	10
21 X 41	400	10
Tommy Bar		
19mm 16"	400	



TUBULAR SPANNERS - SOLID BOX

With / Without Tommy Bar, Finish Chrome Plated, Zinc Plated

Size (mm)	Size (mm)	Size (mm)	Size (mm)	Size (mm)
6 x 7	14 x 15	21 x 23	32 x 36	50 x 55
8 x 9	16 x 17	24 x 27	36 x 41	55 x 60
10 x 11	18 x 19	25 x 28	41 x 46	
12 x 13	20 x 22	30 x 32	46 x 50	



BEARING PULLERS 3 LEGS

Drop forged carbon steel, Chrome plated/burnish finish.

Size (Inch)	Size (mm)	Pcs. Per Master Carton
3	75	40
4	100	36
6	150	16
8	200	10
10	250	6
12	300	6



BEARING PULLERS 2 LEGS

Drop forged carbon steel, Chrome plated/burnish finish.

Size (Inch)	Size (mm)	Pcs. Per Master Carton
3	75	40
4	100	36
6	150	16
8	200	10
10	250	6
12	300	6



OIL FILTER WRENCH - HEAVY DUTY / LIGHTY DUTY



OIL CHANGER SPANNER

Forged carbon steel, Zinc plated.

Size (mm)	Size (mm)
8 x 10 Round Bar	8 Square Bar



OIL FILTER WRENCH WITH THREE LEGS

Gear driven legs to Grip and turn the tightest filters.



JOINT REMOVER

Removes and install Ball Joint on Light Duty Trucks and Jeeps. S.G. Casting with Hex Bolt 1/2" x 12 TPT. Finish Black Powder Coated / Zinc Plated.



OIL FILTER WRENCH (NYLON MODEL)

Reinforced plastic head with spring steel strip, Heavy duty Plastic Body and Control Knob.



SPRING COMPRESSOR

Allow the disassembly of a Coil Spring Structure.

S.G. Casting with 2 Hex Bolt (Black Zinc Plated)

Size of Bolt : 5/8" x 12" x 11 TPI

with 4 Hooks, 4 Hex Nuts (5/8" x 11 TPI), 4 Wing Nuts, 4 Washers, 2 Small Wings, 2 Big Wings.

Finish : Zinc Plated.





COMBINATION PLIER

Drop forged from carbon steel.

Sleeve on handles for comfortable cushion grip.

Hardened & Tempered Jaws

Size (Inch)	Size (mm)	Pcs. Per Master Carton
6	150	84
7	175	72
8	200	60



LONG NOSE PLIER

Drop forged from carbon steel.

Sleeve on handles for comfortable cushion grip.

Hardened & Tempered Jaws

Size (Inch)	Size (mm)	Pcs. Per Master Carton
6	150	84
7	175	72
8	200	60



SIDE CUTTING PLIER

Drop forged from carbon steel.

Sleeve on handles for comfortable cushion grip.

Hardened & Tempered Jaws

Size (Inch)	Size (mm)	Pcs. Per Master Carton
6	150	84
7	175	72
8	200	60



BENT NOSE PLIER

Drop forged from carbon steel.

Sleeve on handles for comfortable cushion grip.

Hardened & Tempered Jaws

Size (Inch)	Size (mm)	Pcs. Per Master Carton
6	150	84
7	175	72
8	200	60



LOCK GRIP / VICE GRIP PLIER

Drop forged from carbon steel.

Size (Inch)	Size (mm)	Pcs. Per Master Carton
5	125	120
7	175	80
10	250	60



LINEMAN'S PLIER

Drop forged from carbon steel.

Size (Inch)	Size (mm)	Pcs. Per Master Carton
9 1/2	240	40



WATER PUMP PLIER, BOX JOINT TYPE

Drop forged from carbon steel / CV Steel.
Hardened & tempered. With / Without Sleeve

Size (Inch)	Size (mm)	Pcs. Per Master Carton
8	200	76
10	250	60
12	300	40
16	400	20



WATER PUMP PLIER, CHANNEL TYPE

Drop forged from high carbon alloy steel. Polished head.
Chrome plated, with cushion grip.

Size (Inch)	Size (mm)	Pcs. Per Master Carton
8	200	80
10	250	60
12	300	40



WATER PUMP PLIER, SLIP JOINT TYPE

Drop forged from high carbon alloy steel. Polished head.
Chrome plated. Available with or without sleeve.

Size (Inch)	Size (mm)	Pcs. Per Master Carton
10	250	60



FENCING PLIER 10.5" HAMMER HEAD

Drop forged from carbon steel.
DIP Sleeve handles for comfortable cushion grip.
Hardened & Tempered.

Size (Inch)	Size (mm)	Pcs. Per Master Carton
10.5	265	40



HEAVY DUTY FENCE PLIER

Size (Inch)	Size (mm)	Pcs. Per Master Carton
10	250	40



4 PC WATER PUMP PLIER SET

Chrome Vanadium Steel
Sizes : 8", 10", 12", 16"



TOP CUTTING PLIER

Drop forged from high carbon alloy steel.
Available in with or without PVC insulation grip.

Size (Inch)	Size (mm)	Pcs. Per Master Carton
6	150	120
7	175	80
8	200	40



TIN SNIP PLIERS

Drop forged from high carbon alloy steel.

Available in with or without spring.

Epoxy coated.

Size (Inch)	Size (mm)	Pcs. Per Master Carton
8	200	80
10	250	60
12	300	40



SLIP JOINT PLIER

Drop forged from high carbon alloy steel, Polished head.

Chrome plated. Available in with or without PVC insulation grip.

Size (Inch)	Size (mm)	Pcs. Per Master Carton
6	150	96
8	200	72
10	250	48



CARPENTER PINCER

Drop forged carbon steel.

Hardened & tempered. Epoxy coated.

Size (Inch)	Size (mm)	Pcs. Per Master Carton
6	150	120
7	175	100
8	200	80
10	250	40



COBBLER PINCER

Drop forged carbon steel.

Hardened & tempered. Epoxy coated.

Size (Inch)	Size (mm)	Pcs. Per Master Carton
6	150	120
7	175	100
8	200	80
10	250	40



TOWER PINCER / RABBIT PINCER

Drop forged carbon Steel / CV Steel.

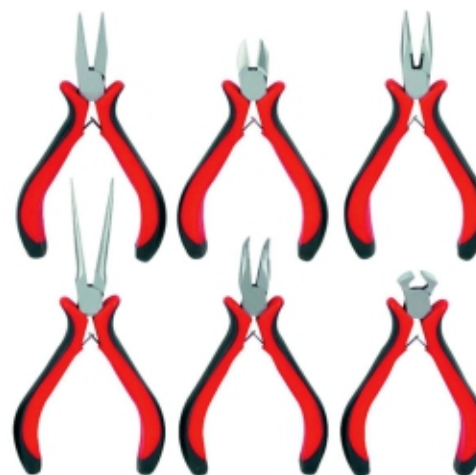
Hardened & tempered. Epoxy coated.

PVC insulation for cushion grip.



Available
Half cut Also

Size (Inch)	Size (mm)	Pcs. Per Master Carton
8	200	100
9	225	80
10	250	60
11	275	32
12	300	20



MINIATURE PLIERS SET 4 1/4"

Manufactured from high carbon steel, hardened, tempered and polished



PIPE WRENCH STILLSON TYPE

Drop forged, carbon steel & hardened teeth.

Size (Inch)	Size (mm)	Pcs. Per Master Carton
8	200	72
10	250	48
12	300	36
14	350	24
18	450	16
24	600	8
36	900	4



PIPE WRENCH - RIDGID TYPE

This Heavy Duty Pipe Wrench is specially used in the oil, gas and Civil engineering Industries.

Size (Inch)	Size (mm)	Pcs. Per Master Carton
8	200	72
10	250	48
12	300	36
14	350	24
18	450	16
24	600	8



SWEDISH PIPE WRENCH 45 DEGREE / 90 DEGREE HEAD

Chrome Vanadium Steel, Powder Coated

Size (Inch)	Size (Inch)
3/4	1-1/2
1	2



THREAD HAND TAPS / ROUND / HEX THREADING DIES & NUTS

THREAD HAND TAPS

Made From Hss / Carbon Steel

Size Range For Hss Hand Taps - Imperial: 1/16" - 4", Metric: 1mm - 120mm

Size Range For Carbon Steel Hand Taps - Imperial: 1/8" - 3", Metric: 2mm - 75mm

Thread Form: Metric Coarse, Metric Fine, Bsw, Bsf, Bsb, Unf, Unc, Uns, Unef, Ba, Bsp,

Bspf, Bspt, Nps, Nptf, Npt, Bscy, Me, Bs Con, Me, Bs Con, Acme, Ngt

Finish: Black Finish, Grey Sand Blast Finish, White Polished Finish

Taps Are Available In R/H & L/H Threads

Standards Conforming: Bs, Ansi, Jis, Din

Supplied In Set Of 3pcs And Single Pc

ROUND / HEX THREADING DIES & NUTS

Made From Hss / Carbon Steel

Size Range For Round Dies - Imperial: 13/16" Od - 4" Od, Metric: 16mm - 100mm

Size Range For Hex Nuts - Imperial: 1/4" - 2-1/2", Metric: 2mm - 90mm

Thread Form: Metric Coarse, Metric Fine, Bsw, Bsf, Bsp, Unf, Nps, Bspt, Ngt, Npt, Etc.

Finish: Black Finish, Grey Sand Blast Finish, White Polished Finish

Taps Are Available In R/H & L/H Threads

Packing: Plastic Box



PIPE VICE SELF LOCKING

Malleable cast iron body & carbin steel jaws. Epoxy coated.

Size (Inch)	Size (mm)	Pcs. Per Master Carton
1.1/2	40	12
2	50	8
2.1/2	65	6
3	75	4
4	100	2



CHAIN PIPE WRENCH

Forged Steel Hardened Jaws/Handle and strong flat links chain is mostly used in trench for all types of pipe fitting jobs, from oil field to general work.

Size (Inch)	Size (mm)
3	75
4	100
6	150
8	200
10	250
12	300



IRON JACK PLANES

Jack Plane, Casted Body, Plain Base, Fine Polished Wood, Steel / Brass Screws, Fully Hardened Blade

Size (Inch.)	Inner Box (Qty.)	Pcs. Per Master Carton
Size 4 (8")	1	12
Size 5 (14")	1	10
Size 6 (18")	1	6
Size 7 (22")	1	6



BLOCK PLANE ADJUSTABLE

Block Plane, Casted Body, Adjustable Brass Screws

Size (mm)
60.5



BLOCK PLANES

Mini Block Plane, Casted Body

Size (Inch.)	Pcs. Per Master Carton
7"	60



T-Bar Cramps

Cast iron/malleable steel jaws, Chrome Plated spindle

Size (Feet)	Size (mm)	Pcs. Per Master Carton
2	600	6
3	900	6
4	1200	4
5	1500	4
6	1800	2
8	2400	2



SMOOTHING PLANE

Made from fine grained grey iron body castings for strength and stability, Cut iron made from high carbon steel.

Size (mm)
245



RABBIT PLANE NO. 78

Rabbit Plane No. 78, Casted Body



BLOCK PLANE SHEET METAL

This block plane is economical very light & is easy to use for general purpose.

Size (mm)
180



SPOKE SHAVES

Spoke Shave, Adjustable Screws

FLAT FACE 54MM
ROUND FACE 54MM

Spoke Shave, Adjustable Screws 45MM



DOVETAIL SQUARE

These handy little squares have spring steel blades riveted to brass faced rosewood stocks and come in two versions, 1:6 for softwood and 1:8 for hardwoods suitable for dovetail joint markings.

Size (Inch.)	Size (inch)
1:6	1:8



CARPENTRY TRY SQUARE, WOODEN HANDLE

A multi purpose tool combining the functions of Try & Mitre Square. Stock are made from best quality rosewood, faced with brass and spring steel blade. The blade is securely held by three brass rivets. Try & Mitre squares are available in four sizes

Size (Inch.)	Brass End	Size (Inch.)	Brass End
3"	Single	3"	Double
6"	Single	6"	Double
9"	Single	9"	Double
12"	Single	12"	Double



ADJUSTABLE BEVEL SQUARE

Adjustable to any angle for making, checking or transferring angles. The stock is made from rosewood with solid brass fitting & spring steel blade available in four sizes.

Size (Inch.)	Size (Inch.)
3"	9"
7.5"	10.5"



MITRE BOX, WOODEN SQUARE

Made from solid beech wood & base solidly screwed & glued with accurate straight & mitre slots for guiding tenon or back saws

Size (Inch.)	Size (mm)	Size (Inch.)	Size (mm)
4	100	9	230
5	125	12	300
6	150		



MORTIS MARKING / COMBINED SQUARE

A combination gauge for both marking lines parallel to an edge and laying out mortice & tenons. The brass slide is set into the stem in a tee slot.

The stock is inlaid with brass wear strips and a solid brass insert provides the thread for the knurled brass locking screw.

All wooden parts are lacquered rosewood.

Available in two sizes

Size (Inch.)	Size (Inch.)
3"	6"



WOOD MALLET

Designed for general joinery work. The selected beech handles are taper mortice matched to fit into beech heads, so that the action of swinging the mallet automatically tightens the head on the handle.

Available in three sizes.

Size (mm)	Size (mm)
100	125
115	



MARKING GAUGE

The Marking Gauge is made of selected rosewood with a protective lacquered finish, fitted with a brass knurled screw for more robust use. The gauge will mark with or across the grain. Available in three sizes.

Size (Inch.)	Size (Inch.)	Size (Inch.)
3	6	9



MORTICE MARKING GAUGE (With Fine Adjustment)

Made of polished rosewood with brass inlays.

Size (Inch.)
4 - 1/2



BREAST DRILL

Double Pinion, Milling Cut Gears
Steel Specification : Cast Iron Body

Size (Inch.)	Size (mm)	Pcs. Per Master Carton
3/8	10	20
1/2	13	10



HAND DRILL MACHINE

Cast iron body, double pinion with wooden handle/plastic handle.

Size (Inch.)	Size (mm)	Pcs. Per Master Carton
1/4	6	24
5/16	8	24



WOOD WORKING VICE

High Quality Steel Screw with Handle
Steel Specifications : Cast Iron

Size (Inch.)	Size (mm)	Pcs. Per Master Carton
6	150	12
8	200	8
9	225	4
10	250	4
12	300	2



NAIL PULLERS

Manufactured from the fine quality high carbon steel. Double bend nail puller with comfortable grip.

Size (Inch.)	Size (mm)	Pcs. Per Master Carton
1/2 x 12	12 x 300	48



C / G - CLAMPS

Malleable steel body with steel screw.
Set of Mini G & C clamp available 1", 2", 3"

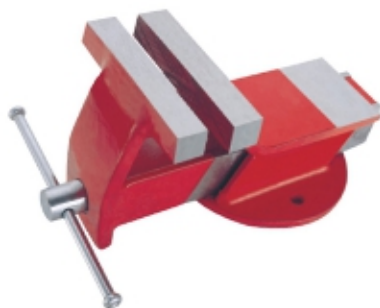
Size (Inch.)	Size (mm)	Pcs. Per Master Carton
2	50	80
3	75	50
4	100	30
5	125	30
6	150	20
8	200	15
10	250	10
12	300	8



WRECKING BARS

Manufactured from fine quality high carbon steel. Chisel end on one side & swan neck on the other side. Rust resistant epoxy coated.

Size (Inch.)	Size (mm)	Pcs. Per Master Carton
1/2 x 12	12 x 300	60
5/8 x 18	16 x 450	36
5/8 x 24	16 x 600	24
5/8 x 30	16 x 750	18
3/4 x 18	18 x 450	24
3/4 x 24	18 x 600	24
3/4 x 30	18 x 750	18
3/4 x 36	18 x 900	12
1 x 36	25 x 900	6



ALL STEEL VICE FIX BASE

Manufactured from high tensile mild steel plates. Face jaws are manufactured from high carbon heat-treated steel.

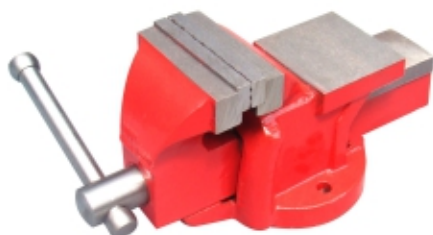
Size (Inch.)	Size (mm)	No.	Pcs. Per Master Carton
3	75	1	6
4	100	3	4
5	125	5	2
6	150	6	1
8	200	8	1



ALL STEEL VICE SWIVEL BASE

Manufactured from high tensile mild steel plates. Low profile 360°, swivel base locks at any desired angle. Face jaws are manufactured from high carbon heat-treated steel.

Size (Inch.)	Size (mm)	No.	Pcs. Per Master Carton
3	75	1	6
4	100	3	4
5	125	5	2
6	150	6	1
8	200	8	1



CAST IRON BENCH VICE FIX BASE

Vice body made of high tensile grey cast iron. Jaws of Carbon steel.

Size (Inch.)	Size (mm)	No.	Pcs. Per Master Carton
3	75	1	4
4	100	3	4
5	125	5	2
6	150	6	1
8	200	8	1



CAST IRON BENCH VICE SWIVEL BASE

Vice body made of high tensile grey cast iron. Jaws of carbon steel. Low Profile 180°, Swivel base locks any desired angle.

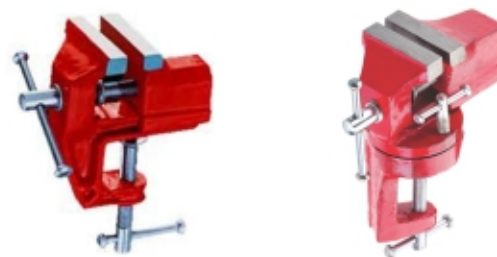
Size (Inch.)	Size (mm)	No.	Pcs. Per Master Carton
3	75	1	4
4	100	3	2
5	125	5	2
6	150	6	1
8	200	8	1



ANVIL

Selected Grade Cast Iron, Finishes : Painted

Size (Kg.)	Size (Kg.)	Size (Kg.)	Size (Kg.)
0.5	2	10	40
1	5	25	50



BABY VICE FIX / SWIVEL BASE

Body made of cast iron. Epoxy coated. Zinc plated spindle.

Size (Inch.)	Size (mm)	Pcs. Per Master Carton
1	25	50
1.1/2	40	24
2	50	20
2.1/2	60	20
3	75	16



OIL CANS (PERFETTO TYPE)

Metal Body can comes fitted with one rigid and one flexible spout, Choice of steel or brass pressure pump.

Size Capacity (cc)	Pcs. Per Master Carton
200	100
300	100
500	100
700	50
1000	50



OIL CANS (WESCO TYPE)

Metal Body can comes fitted with one rigid and one flexible spout, Choice of steel or brass pressure pump.

Size Pint	Pcs. Per Master Carton
1/4	100
1/2	100
3/4	100
1	50
1 1/2	50
2	50



OIL CANS PISTOL TYPE

Steel / Brass Pump With Fixed / Flexible Spout, Sheet Metal Body, Powder Coated Finished

Size Pint	CC	Pcs. Per Master Carton
1/4	125	100



GREASE GUNS LEVER TYPE WITH FIXED OR FLEXIBLE SPOUT

High pressure grease guns, designed for bulk or cartridge grease.

Size Capacity (oz.)	CC	Pcs. Per Master Carton
10	300	25
15	450	16
20	600	15



SUCTION GUN

Sheet Metal Body, Powder Coated Finishes

Capacity (oz)	Capacity (gms)	Pcs. Per Master Carton
10	448	15

GREASE BUCKET WITH / WITHOUT TROLLEY

Lever Operated pump mounted on cover of drum. Quick & easy openable cover. Removable handle. Comes complete with 2-2 meter o high pressure hose fitted with accessories. Working pressure up to 4000 PSI. Pump has steel construction cast head and solid steel pump chamber

Capacity (Kgs)	Pcs. Per Master Carton	Capacity (Kgs)	Pcs. Per Master Carton
5	1	15	1
10	1	20	1



ROTARY OIL PUMPS

Size (Inch.)	Size (mm)	Pcs. Per Master Carton
3/4	18	4

MASONRY TOOLS



CHISELS - FLAT / POINTED HEAD

made from tested tool steel. Shrinking surface is heated treated for long life. Cutting edge is precise ground for exact angle. Available with or without grip. Rust resistant epoxy coated

Size (Inch.)	Size (mm)	Pcs. Per Master Carton
5/8 x 8	16 x 200	60
5/8 x 10	16 x 250	48
5/8 x 12	16 x 300	48
3/4 x 8	18 x 200	48
3/4 x 10	18 x 250	48
3/4 x 12	18 x 300	36
3/4 x 14	18 x 350	36



CROW BARS

Chisel End on one side and pointed on the other Forged, Hexagonal Section, heat treated. High Quality Carbon Steel

Size Dia (mm)	Size Length (mtr)	Pcs. Per Master Carton
25	1.0	5
25	1.2	3
25	1.5	3
25	1.8	2



BAR BENDER FRENCH MODEL

Bar Bender Single Head French Model hardened and tempered

Size (mm)	Weight +- 5% (gms)	Dia of Rod (mm)	Finish
6	295	10	Painted
8	400	12	Painted
10	500	12	Painted
12	650	14	Painted
14	925	16	Painted
16	1350	18	Painted
18	1750	20	Painted
20	2700	23	Painted
22	3400	26	Painted
24	4500	30	Painted
26	5450	30	Painted



BRICK BOLSTER

Manufactured from fine quality high carbon steel. Drop forged, with or without grip. Rust resistant epoxy coated.

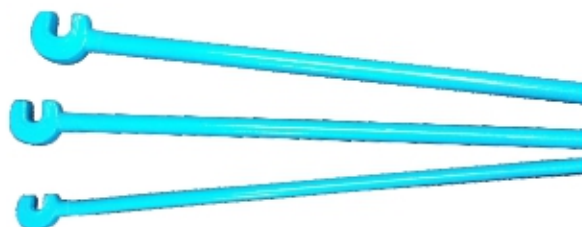
Size (Inch.)	Size (mm)	Pcs. Per Master Carton
2.1/4	55	40
3	75	24
4	100	24



MASON PEGS

Manufactured from fine quality high carbon steel. Rust resistant epoxy coated.

Size (Inch.)	Size (mm)	Pcs. Per Master Carton
10	250	100



BAR BENDER ECONOMY MODEL

Bar Bender Single Head Economy Model

Size (mm)	Weight +- 5% (gms)	Dia of Rod (mm)
6	200	10
6	250	12
8	410	12
10	625	14
12	875	16
14	1210	18
16	1500	20
18	1900	22
20	2150	22
22	2500	24
24	2825	25
26	3150	27



BALL PEIN HAMMER WITH WOODEN HANDLE

Drop forged carbon steel. Heat treated.

Size (Lbs.)	Size (gms)	Pcs. Per Master Carton
1/4	100	120
1/2	200	72
3/4	300	48
1	500	36
1.1/4	600	24
1.1/2	800	24
2	900	16



CROSS PEIN HAMMER WITH WOODEN HANDLE

Drop forged carbon steel. Heat treated.

Size (Lbs.)	Size (gms)	Pcs. Per Master Carton
1/4	100	120
1/2	200	72
3/4	300	48
1	500	36
1.1/4	600	24
1.1/2	800	24
2	900	16



CLAW HAMMER WOODEN HANDLE - AMERICAN TYPE

Drop forged carbon steel. Heat treated.

Size (Lbs.)	Size (gms)	Pcs. Per Master Carton
1/2	225	72
1	450	36



CLAW HAMMER WOODEN HANDLE - GERMAN TYPE

Drop forged carbon steel. Heat treated.

Size (Lbs.)	Size (gms)	Pcs. Per Master Carton
1/2	225	72
1	450	36



CLAW HAMMER STEEL HANDLE

Drop forged carbon steel. Heat treated.

Size (Lbs.)	Size (gms)	Pcs. Per Master Carton
1/2	225	72
1	450	36



SLEDGE HAMMERS

Drop forged carbon steel. Heat treated.

Size (Lbs.)	Size (Kgs)	Size (Lbs.)	Size (Kgs)
2	1	10	5
3	1.1/2	12	6
4	2	14	7
6	3	16	8
8	4		



CLUB HAMMERS / STONNING HAMMERS

Drop forged carbon steel. Heat treated.

Size (gms)	Pcs. Per Master Carton	Size (gms)	Pcs. Per Master Carton
800	24	2000	12
1000	24	3000	8
1250	16	4000	6
1500	16	5000	6



MACHINIST HAMMERS

Drop forged carbon steel. Heat treated.

Size (gms)	Pcs. Per Master Carton	Size (gms)	Pcs. Per Master Carton
100	120	800	24
200	80	100	16
300	60	1500	12
400	40	2000	8
500	40		



10 POCKET LARGE CAPACITY SPLIT LEATHER

2 Large Main Pocket, 3 Medium Sized Front Nail Pockets. 4 Small Pockets, Fixed Hammer Holders With Leather Tape Pocket. Double Stitched With Adjustable Belt & Quick Release Buckle. Extra Rivet Reinforcement For Added Strength



10 POCKET PROFESSIONAL STYLE SPLIT LEATHER

2 Large Main Pockets, 2 Medium Sized Nail Pocket. 6 Small Pencil Pocket, 2 Leather Hammer Loops & A Steel Tape Holder. Double Stitched & Extra River For Added Strength. Adjustable Belt With Quick Release Buckle



5 POCKET SPLIT LEATHER PROFESSIONAL

1 Large Main Pocket, 3 small Tool Pockets. 1 Medium Size Nail Pocket With Metal Holder & One Knife Sheath With One Leather Hammer Loop. Double Stitched & River For Added Strength. Adjustable Belt With Buckle



10 POCKET SPLIT LEATHER ECONOMY WORK APRON

2 Large Main Pockets, 6 Small Tool Pockets. 2 Medium Sized Stitched Pockets. 2 Leather Hammer Loops & One Metal Tape Holder. Double Stitched & Rivet Added For Strength. Adjustable Web Belt With Buckle



2 POCKET SPLIT LEATHER LARGE NAIL BAG

2 Large Main Pocket. Adjustable Belt With Plastic Buckle. Rivet For Added Strength



SPLIT LEATHER WELDING APRON

Made Of Split Leather. Split Leather Shoulder & Waist Strap. 1 Small Pocket To Hold Valuables



3 POCKET SPLIT LEATHER JUNIOR POUCH

1 Large Main Pocket, 1 Small Tool Pocket. 1 Medium Stitched Pocket. River For Added Strength. Wide Belt Tunnel Slot



8 POCKET SPLIT LEATHER CARPENTER NAIL & TOOL BAG

1 Large Pocket, 1 Medium Sized Pocket. 6 Small pencil Pocket With 2 Leather Hammer Loops. Double Stitched & Rivet Reinforced. Wide Belt Tunnel Slot



FIX HAMMER HOLDER

Leather With Fix Chrome Plated Buckle & Riveted



REVOLVING HAMMER HOLDER

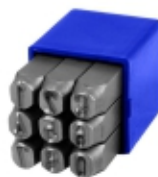
Leather With Movable Chrome Plated Buckle & Riveted



LETTER PUNCH 27 PCS SET

Carbon Steel Hardened & Tempered

Size (Inch.)	Size (mm)	Size (Inch.)	Size (mm)
3/32	2.5	1/4	6
1/8	3	5/16	8
5/32	4	3/8	10
3/16	5	1/2	12



NUMBER PUNCH 9 PCS SET

Carbon Steel Hardened & Tempered

Size (Inch.)	Size (mm)	Size (Inch.)	Size (mm)
3/32	2.5	1/4	6
1/8	3	5/16	8
5/32	4	3/8	10
3/16	5	1/2	12



NAIL PIN PUNCHES - ROUND HEAD

Hardened & Tempered, Knurled Body for Secured Grip, Steel Specifications:- Carbon Steel Body

Punch Diameter		Length		QTY / Box
Inch	mm	Inch	mm	
1/16	1.5	4	100	1000
3/32	2.5	4	100	1000
1/8	3	4	100	1000
5/32	4	4	100	600



NAIL PIN PUNCHES - SQUARE HEAD

Hardened & Tempered, Knurled Body for Secured Grip, Steel Specifications:- Carbon Steel Body

Punch Diameter		Length		QTY / Box
Inch	mm	Inch	mm	
1/16	1.5	4	100	1000
3/32	2.5	4	100	1000
1/8	3	4	100	1000
5/32	4	4	100	600

DRIVE PIN PUNCHES

Hardened & Tempered, Knurled Body for Secured Grip, Steel Specifications:- Carbon Steel Body, Availability : 4" (100MM) Long, 6" (150MM) Long, 8" (200MM) Long

Size (Inch)	Size (mm)	QNTY	Size (Inch)	Size (mm)	QNTY
1/16	1.5	1000	7/32	5.5	600
3/32	2.5	1000	1/4	6	400
1/8	3	1000	5/16	8	400
5/32	4	800	3/8	10	200
3/16	5	600			



CENTRE PIN PUNCHES

Hardened & Tempered, Knurled Body for Secured Grip, Steel Specifications:- Carbon Steel Body

Round Head Size (Inch)	Qty	Square Head Size (Inch)	Qty
1/16	1500	1/16	1000
5/16	1000	3/32	1000
3/32	1000	1/8	1000
1/8	1000	5/32	800
9/64	1000	3/16	800



12 PIECE CHISEL AND PUNCH SET

CONSTITUENTS

Cold Chisel -	10 x 138 mm	Starting Punch -	2.5 x 125 mm
	12 x 150 mm		1.5 x 100 mm
	16 x 163 mm		3.0 x 120 mm
	4 x 125 mm		4.0 x 125 mm
Center Punch -	6 x 150 mm		5.0 x 132 mm
			6.0 x 145 mm
			8.0 x 150 mm



HACKSAW FRAME WOODEN HANDLE

Wooden Handle Supplied with 300MM Blade, Strong Steel Frame, Powder Coated

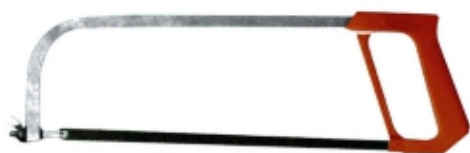
Size (Inch)	Pcs. Per Master Carton
12	48



HACKSAW FRAME WITH PLASTIC HANDLE

Heavy Duty Moulded Plastic handle, Chrome Plated

Size (Inch)	Pcs. Per Master Carton
12	58



HACKSAW FRAME WITH TUBULER STEEL HANDLE

Strong Die Casted handle, Supplied With 300MM Blade

Size (Inch)	Pcs. Per Master Carton
12	56



JUNIOR HACKSAW WITH STEEL HANDLE

Junior Hack saw With Steel Frame 6"

Size (Inch)	Pcs. Per Master Carton
6	58



JUNIOR HACKSAW WITH PLASTIC HANDLE

Junior Hack saw 6", Plastic Handle

Size (Inch)	Pcs. Per Master Carton
6	48



MINI HACKSAW

Mini Hack saw With 12" Blade

Size (Inch)	Pcs. Per Master Carton
12	58



HACKSAW FRAME SQUARE TUBULER STEEL TUBE WITH PLASTIC HANDLE

Hack saw, Square Tubular Frame With Plastic Handle - 12"

Size (Inch)	Pcs. Per Master Carton
12	48



WOODEN SAW

High Speed Carbon Steel Blade, With Insert Moulded Plastic Handle

Size (Inch)	Pcs. Per Master Carton
12	60
14	60
16	40
18	40
20	40
24	40



J K Industrial Corporation

K 257, Phase-8, Focal Point, Ludhiana - 141010, Punjab, (India)
P: +91-161-2975723 F: +91-161-2675654 M: +91-98140-75723

W: www.jkhandtoolsindia.com E: sales@jkhandtoolsindia.com